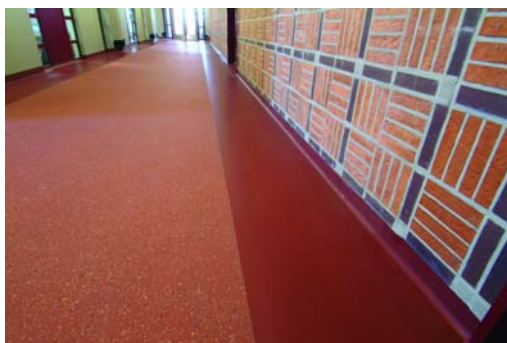


## Ready for the future



During the second World War, bombs wiped out large parts of the city of Rotterdam. Just after the war, the Grand Trade Building filled one of the many gaps with a gross floor area of 110,000 m<sup>2</sup> and was opened by Queen Juliana in 1953. The building has become an icon of the post-war reconstruction and a metaphor for Rotterdam vigour.

In 1991 the Grand Trade Building was listed as a municipal monument. The National Trust does not only stipulate conditions for the exterior of the building, but also deals with important elements in the interior, like the walls and flooring of hallways. The requirements set by the National Trust affected the renovation that the Rotterdam business building needed after 50 years. A thorough job has been done on both the interior and the exterior. As many elements of the original architecture as possible have been restored. In addition, the authentic character has been successfully combined with modern comforts.



[Architect J. van Stigt](#) went to look for materials that visually fit in with the interior of the building from 1953. As to the floor finish, this search led Van Stigt to the [Bolidtop<sup>®</sup> Select Soft](#) system. Looks-wise, this flooring system comes close to the flooring that the Grand Trade Building had in the fifties, which brings the authentic character of those days to life. Besides aesthetic requirements, the flooring also had to meet functional requirements. Over the past 50 years, the floor finish throughout the building has been changed regularly, which left glue residue, old tiled floors and several other irregularities on the base surface. By placing a special sublayer under the Bolidtop<sup>®</sup> Select Soft system, these old floors did not form an obstacle to the renovation. Apart from that, the Bolidtop<sup>®</sup> sublayer in combination with the Bolidtop<sup>®</sup> Select Soft system greatly improved the acoustic insulation. Ideal for a shared business building like the Grand Trade Building.

From the outside the Grand Trade Building looks impressive, the inside is full of activity. Trade, services, catering, [offices](#), [retail](#). Whoever is an entrepreneur, can join in. That is the way it was fifty years ago and that is how it will be for at least the next fifty years! In short: the [Grand Trade Building](#) is ready for the future!